

CASE STUDY

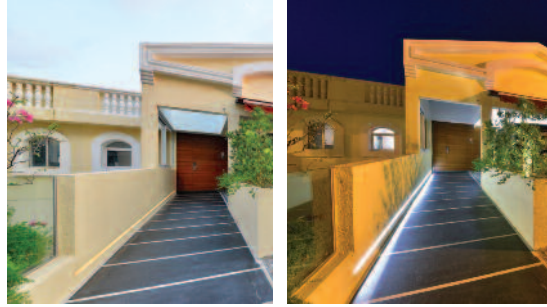
Palm Drive: Problem-solving lighting for a luxury home



A stylish Hong Kong property with a scheme to enhance its exotic location

“*Re:light not only provided full and detailed information and drawings but also superb project management especially given the time differences and distances involved. The finished product was stunning and has been much admired.*”

Mrs E McCoy, home owner



...making light work

THE BRIEF

The client required a lighting scheme which would create different moods in the various zones of the open plan living space of this family home. Additionally it needed to accent artworks and complement the exceptional natural light and views and bring the outside in.

This proved a challenge as the ceiling is comprised of solid concrete so an imaginative and problem-solving solution was required.

THE SITE

Occupying an enviable position on the edge of Tai Tam harbour, in the Redhill Peninsula - a southern district of Hong Kong Island, this colonial style house is part of a low rise development and was remodelled to meet the needs of family life.

The property comprises 4 bedrooms, a large open plan living space, 4 bathrooms, a basement playroom and terrace with a glass frontage overlooking stunning waterside views.



The Yard, 1a Walter Street
Bristol, BS3 1WS

T: 0117 963 3404
E: info@relight.ltd.uk
W: www.relight.ltd.uk



THE SOLUTION

OPEN PLAN LIVING SPACE

This part of the property is divided into three discrete zones: the main sitting area which is double-height, has stairs to the upper floor, is overlooked by a gallery and dominated by an imposing feature wall; a dining area and a chill out snug area for watching TV. The solution involved providing a scheme which gave each of these spaces a different feel.

The main sitting area is lit by frameless LED light projectors (downlighters) which illuminate the space from the high ceilings and shed light onto the feature wall and a raised sculpture. The recessed fireplace part of this wall has integral lighting which picks out artwork. Ambient light is also produced from low level 5 amp table lighting and planters on the substantial balcony are under-lit creating horizontal shafts of light across the floor. The open staircase has plaster-in step lights which lead you to the upper level.

The dining and snug areas are divided by a shelving unit with integrated lighting the former lit by a striking centre-piece pendant creating an intimate dining experience. The snug is partially lit by the shelving unit but also by a 'curtain' of light shed downwards from a pelmet detail and surface mounted box downlighters.

BEDROOMS & BATHROOMS

In the master bedroom the scheme made use of a dominating bulkhead which has downlighters accenting the feature wall of the room with a concealed uplighting element providing higher ambient light to the room. It also benefits from a curtain of light falling down from the top of the window.

The impressive en-suite bathroom features under-lighting on the dual sink vanity unit and lighting around the mirrors. The bath has in-ground lights around its base.

EXTERNAL

The front of the house is illuminated by a slot of light cut into the wall at low level, guiding you up the driveway, where a wash of light falls from a pelmet down the façade. It also has a bespoke core 10 steel back-lit house number.

THE RESULTS

