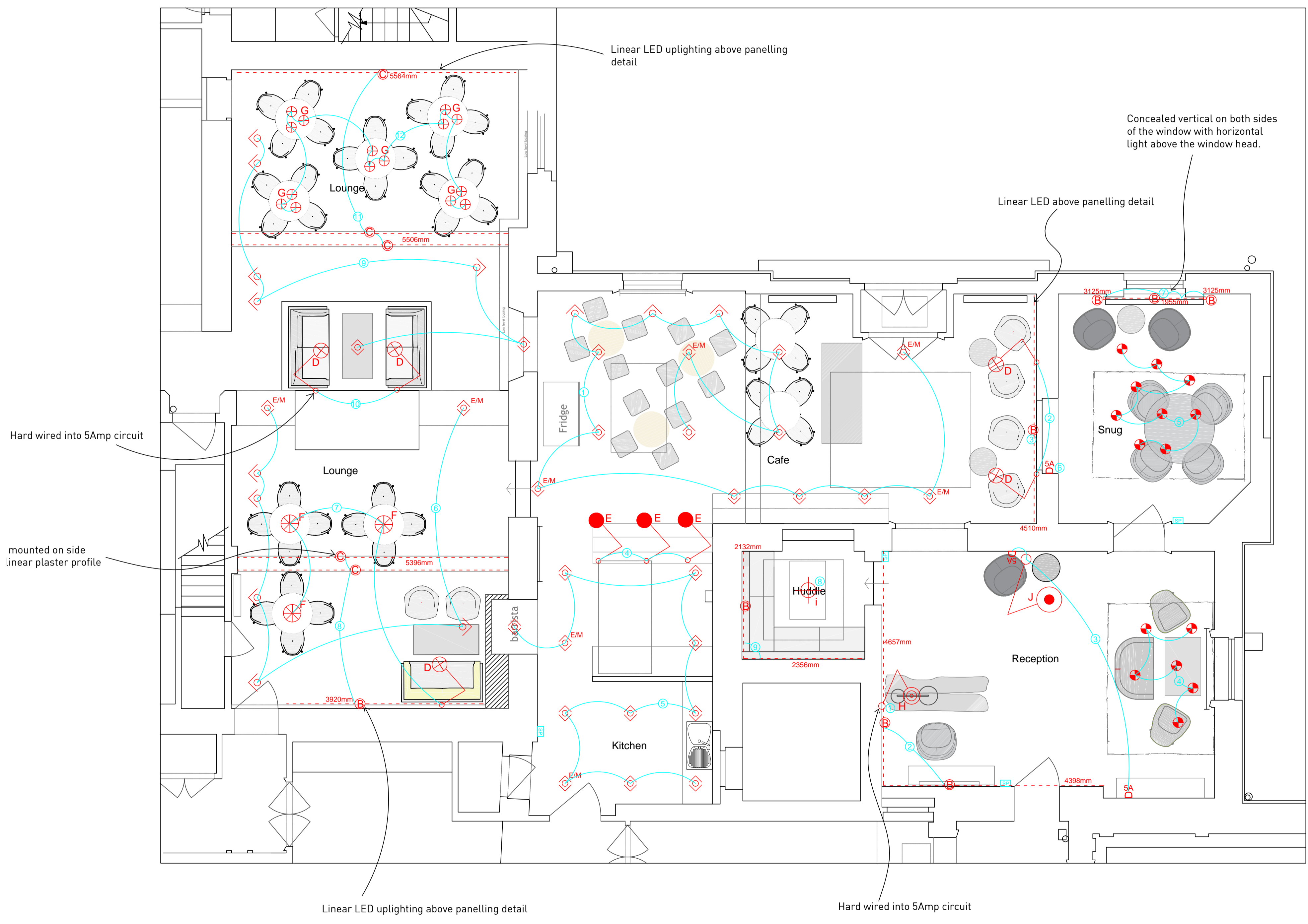


Key	
Type A1	Fixed downlight
Type A2	Emergency downlight
Type A3	Directed downlight
Type B	Linear LED Optos 1 13.2W - Optaflex 2
Type C	Linear LED Optos 1 - Optaflex 2 - in plaster profile
Type D	Anglepoise wall light
Type E	Anglepoise wall light with base
Type F	Anglepoise large pendant
Type G	Small multi drop Anglepoise original 1227 pendant
Type H	Artemide adjustable lamp - wall
Type I	Verpan Fun 1DA
Type J	Artemide floor lamp
	original pendant/chandelier fittings relocated
	5Amp wall socket
	Deactivates circuit controlled by Lutron
	Switch Plate

- Note A - Constant voltage**
- Parallel wiring.
 - Drivers must not be further than 10m away from the start of the length.
 - Linear LED must be re-energised every 5m.
- Note B - Constant current**
- Wire in series.
 - Drivers must not be further than 50m away from the start of the length.
 - Check max loading of the driver - correct mille ampage must be used.



The Yard
1A Walter Street
BRISTOL BS3 1WS

T +44 (0) 117 963 3404

© Copyright
No part of this drawing may be reproduced, stored in a retrieval system, or transmitted in any form, by any means electronic, mechanical or photocopying, recording or otherwise without prior written permission of the designer.

Project
Cafe/Reception
Drawing Title
Lighting layout
Date drawn
27.10.2017
Scale

1:50 @ A1
DWG no.

3B.001.KH/SK
Drawn by
K.Helin/S.Kelly

Revision
B

Notes
Responsibility is not accepted for mistakes made by others scaling from this drawing.